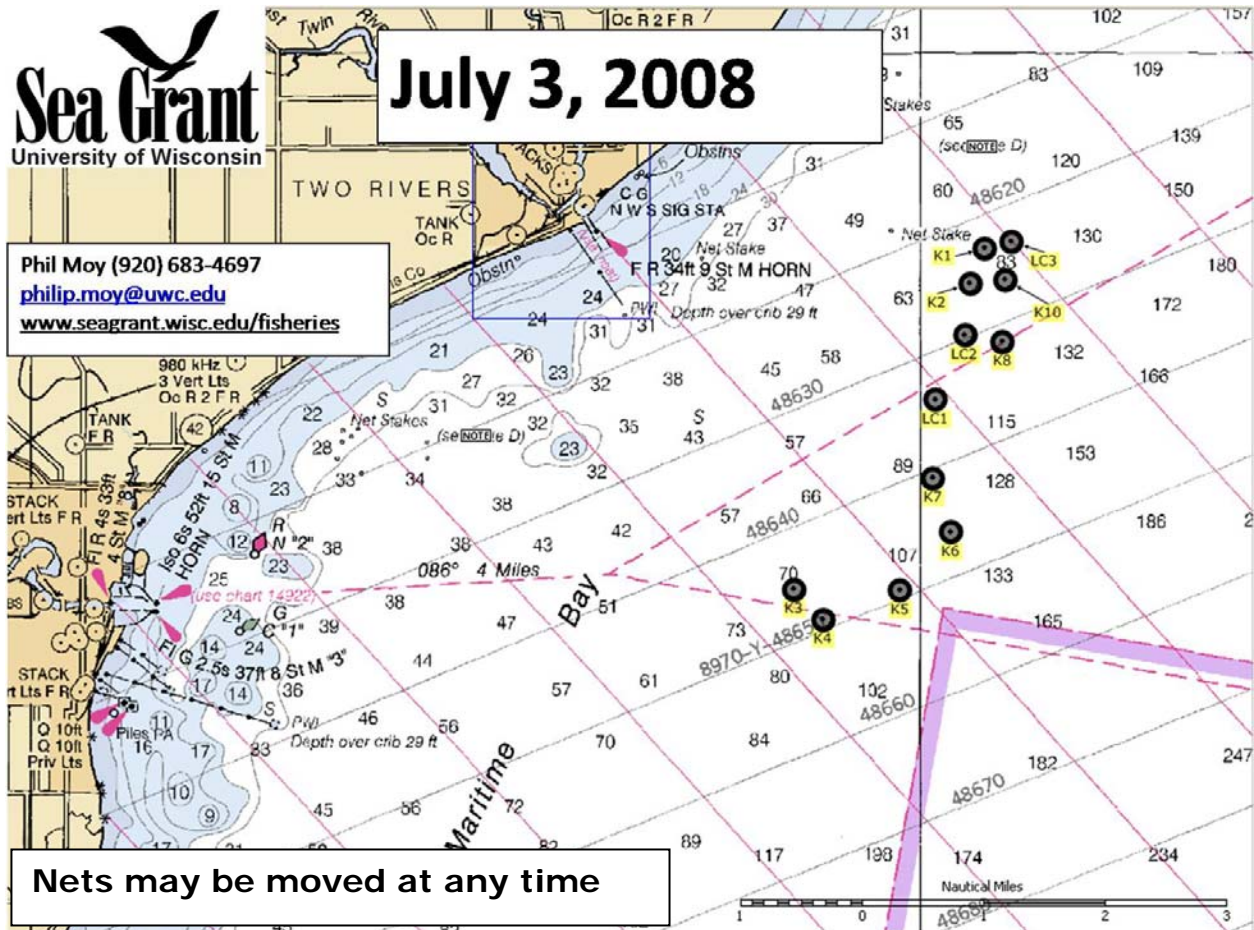


**July 3, 2008**

Phil Moy (920) 683-4697  
philip.moy@uwc.edu  
www.seagrant.wisc.edu/fisheries



Coordinates indicate location of the pot. The leads extend shoreward.  
Avoid the buoys/flags – the anchor lines can tangle lures

LeClair Nets					
LC1	44 07 .189 N	LC2	44 07 .711 N	LC3	44 08 .467 N
	87 29 .829 W		87 29 .491 W		87 28 .973 W

Kulpa Nets					
K1	44 08 .408 N	K4	44 05 .410 N	K7	44 06 .530 N
	87 29 .291 W		87 31 .108 W		87 29 .872 W
K2	44 08 .125 N	K5	44 05 .649 N	K8	44 07 .642 N
	87 29 .452 W		87 30 .266 W		87 29 .102 W
K3	44 05 .635 N	K6	44 06 .143 N	K10	44 08 .157 N
	87 31 .437 W		87 29 .675 W		87 29 .079 W